



World Spine Care Research Program

Deborah Kopansky-Giles, DC, FCCS, MSc

Mahalapye, Botswana

April 2013



The Bone and Joint Decade
Promoting musculoskeletal health

Keep people moving



World Spine Care Research Program

Underlying Principles

- **Culturally sensitive and appropriate to the local community**
- **Inclusive, with Botswana researcher participation**
- **Research capacity building (training and mentorship)**
- **Relevant to local health care needs**
- **Unbiased and ethical**
- **Generation of new information to support policy planning and development**
- **Input and support from :**
 - **Community**
 - **Local providers**
 - **Government**

World Spine Care Research Program Project 1

“Developing and Evaluating an Innovative Integrated Model of Care for the Management of Chronic Musculoskeletal Conditions in Vulnerable Populations”

Proposal being prepared for the Gates Foundation and CIHR(Canada)

Deborah Kopansky-Giles DC, MSc – CMCC, Canada

Silvano Mior, DC, PhD – CMCC, Canada

Scott Haldeman MD, PhD – U California, Irvine, Los Angeles, USA

Lisa Puchalski, MD, PhD , University of Toronto, Canada

Damion Hoy PT, Ph.D. – U. Queensland, Australia

Marika Tammaru, MD, PhD, University of Tartu, Estonia

Geoff Outerbridge, DC, MSc, World Spine Care Clinic – Botswana

Joan Haldeman, PT, World Spine Care Clinical Coordinator

Jan Hartvigsen, DC, PhD, University of Southern Denmark

Eric Hurwitz, DC, PhD, University of Hawaii, USA

Botswana researcher/co-investigator needed



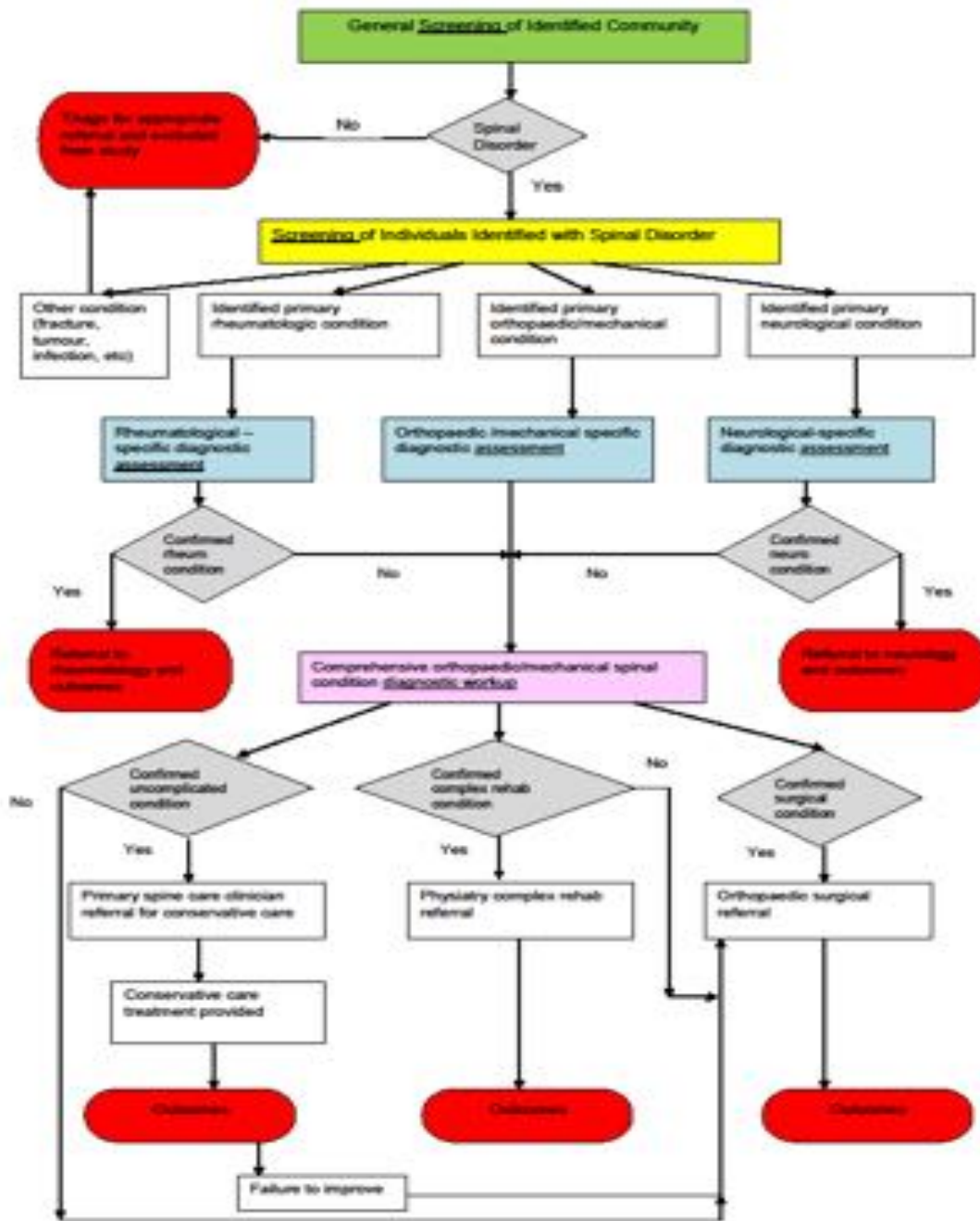
World Spine Care Research Program Project 1

Innovative and Culturally Appropriate Integrated Model of Spine Care:

- Interprofessional team-based care that is patient centered and evidence-based
- Clinical care pathways for:
 - Screening
 - Assessment
 - Treatment
 - Management
- Conservative care and rehabilitation
- Triage to Specialist Care
 - Rheumatology
 - Orthopaedics
 - Neurology



Draft neuromusculoskeletal screening, assessment and treatment algorithm for spinal conditions encountered in residents of a rural Botswana community



World Spine Care Research Program

Project 2

“Developing and Evaluating a Front Line Health Care Worker Training Module for the Screening and Assessment of Chronic Spine Conditions in Botswana”

Proposal being prepared for the Gates Foundation and CIHR(Canada)

Deborah Kopansky-Giles DC, MSc– CMCC, Canada

Lisa Puchalski, MD, PhD (Cand), University of Toronto , Canada

Gina Peixoto PT, MSc – University of Toronto, Canada

Maria Hondras, DC, MPH – University of Southern Denmark

Geoff Outerbridge, DC, MSc, World Spine Care Clinic

Joan Haldeman, PT, World Spine Care

Botswana researcher/co-investigator needed



World Spine Care Research Program

Project 2

Front Line Health Care Worker Training Module

- Supporting local capacity building and program sustainability
- Culturally appropriate training program
- Screening
- Assessment
- Retention
- ‘Train the trainer’ model
- Potential for a certification program for participants



World Spine Care Research Program

Project 3



“Assessing the frequency and type of musculoskeletal conditions presenting in HIV + Batswana in Shoshong Village”

Proposal being prepared for the Gates Foundation and CIHR(Canada)

Deborah Kopansky-Giles – CMCC, Canada

Eric Hurwitz, DC, PhD, University of Hawaii, USA

Scott Haldeman – U California, Irvine, Los Angeles , USA

Anthony Tibbles DC, FCCS – CMCC, Canada

Damion Hoy PT, Ph.D. – U. Queensland, Australia

Marika Tammaru, MD, PhD, University of Tartu, Estonia

Maria Hondras, DC, MPH – University of Southern Denmark

Geoff Outerbridge, DC, MSc, World Spine Care Clinic – Botswana

Botswana researcher/co-investigator needed



World Spine Care Research Program

Project 3

Frequency and type of musculoskeletal conditions presenting in people living with HIV/AIDS

- Understanding the 'burden' of HIV/AIDS in our clinical population in Shoshong and Mahalapye
- Prevalence of HIV/AIDS in patients presenting to World Spine Care clinics
- Type of MSK conditions found in PLWAs
- Frequency of MSK conditions in PLWAs found in body regions (spine, knees, hips, shoulders, elbows, hands, feet)
- Relation of HAART medication to joint pain and osteoporosis in people living with HIV/AIDS?



Thank you!



The Bone and Joint Decade
Promoting musculoskeletal health

Keep people moving